

## Switchgears type BPP-04, BPP-05, BPP-06

for rated voltage 500V



Through connection blocks type BPP-04, BPP-05, BPP-06 are devices designed for use in underground mining pits in non-explosive coal dust conditions and on the ground.

Through connection blocks type BPP-04, BPP-05, BPP-06 are designed for connecting and distributing power in mine distribution three-phase grid with isolated star point transformer (IT system) for rated grid voltage of 500V. Wires are connected to the block via cable clamps through cable glands.

### TECHNICAL DATA:

|   |                                |
|---|--------------------------------|
| ingress protection                        | IP54                           |
| insulation rated voltage of main circuits | 660 V                          |
| rated power supply voltage                | 3x500V, 50Hz, IT grid          |
| rated current of the BPP-04 outlet        | 160A                           |
| rated current of the BPP-05 outlet        | 250A                           |
| rated current of the BPP-06 outlet        | 400A                           |
| number of outlets                         | 1                              |
| dimensions                                | 1280 x 540 x 400mm (H x W x D) |

## CONSTRUCTION

The through connection block is composed of a housing mounted on a frame construction, equipped with brackets. The frame construction allows the device to be hung on the pit wall.

## MODE OF OPERATION

Blocks type BPP-04, BPP-05, BPP-06 are equipped with fuse disconnecter Q1. The fuse disconnecter position can be locked by putting a lock on its drive lever.

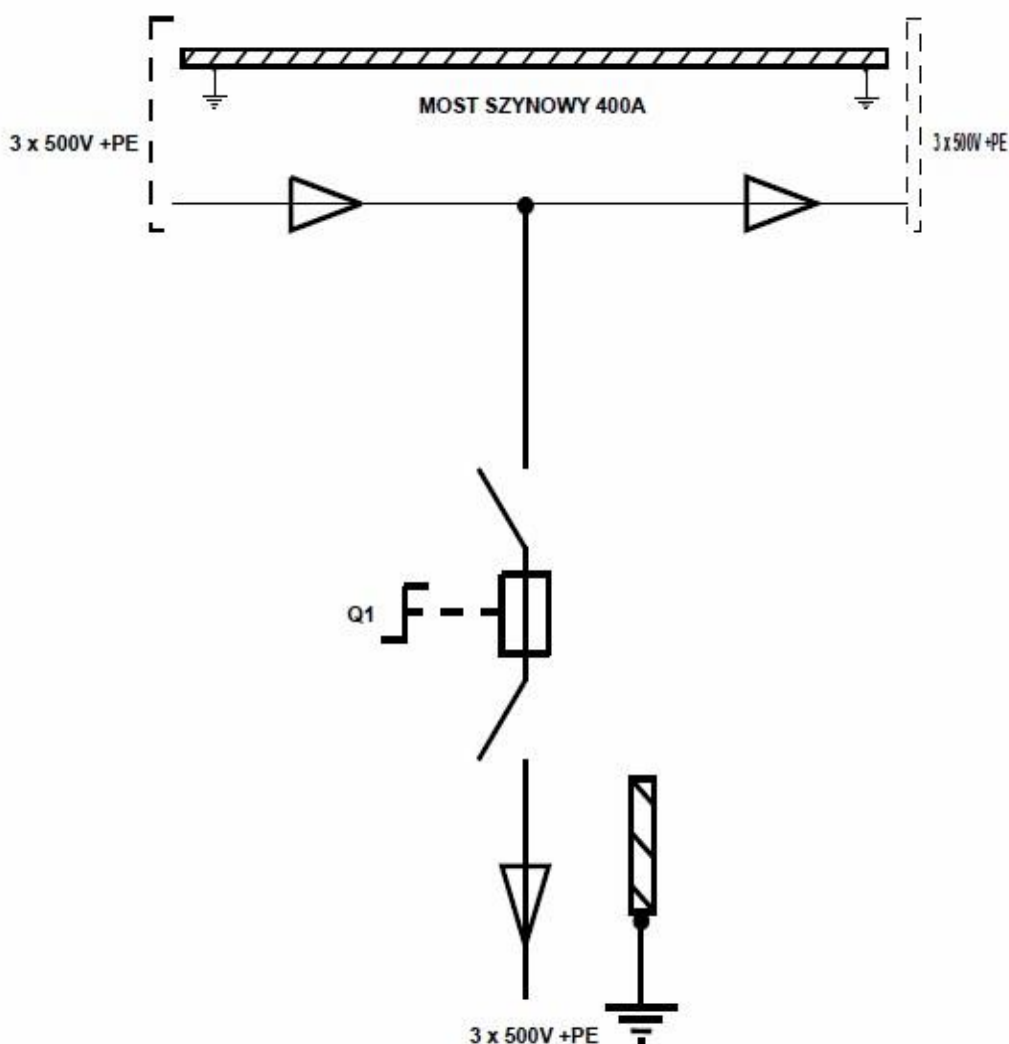
Turning on/off the outlet on is carried out by fuse disconnecter.

## SCHEMATIC DIAGRAM

### Legend:

Most Szynowy – **Bus Bridge**

Q1 – **Fuse disconnecter**



Orders should be submitted in writing or by fax to the address: